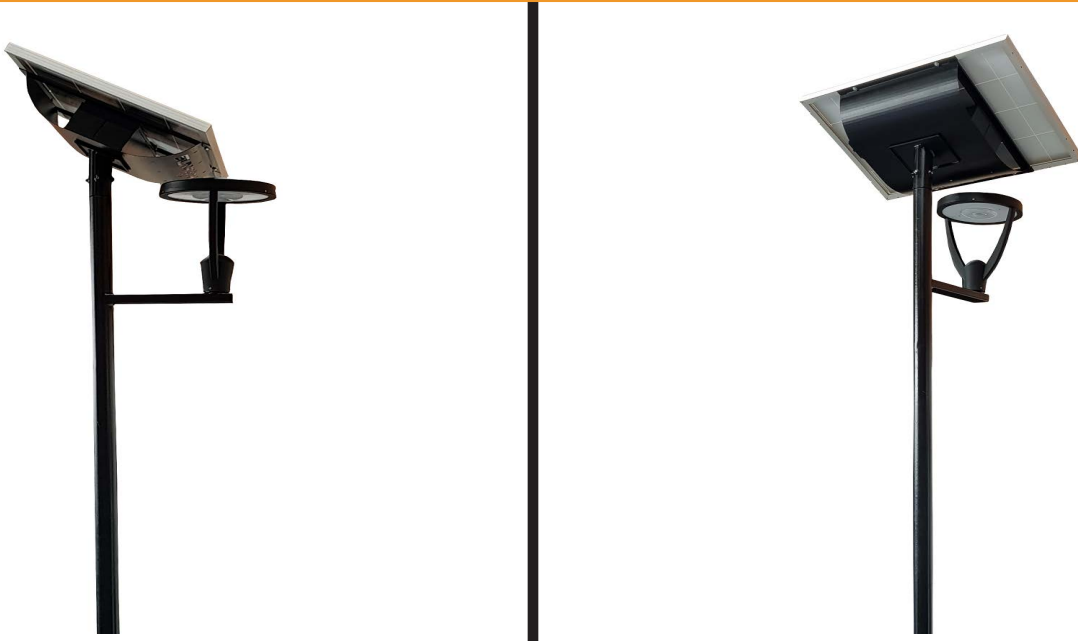


20W Solar LED Post Top
Model SSLASOLPT20UNI-LI



- Integrated Battery Design
- Highpower & Robust
- Lithium-Ion Technology
- Alu Zinc / Stainless Steel
- Different Colour Options
- Made in South Africa

The 20W Universal Solar LED Post top light is a slimline, compact and aesthetically pleasing which incorporates all components together classed as in integrated design.

This model is supplied with a 20W Philips SMD LED Post Top with a lumen output of 150lm/w.

Lighting parameters are based on 13 hours per night for your longest winter night to operate 365 days per year with intelligent Smart 365 Solar controller technology.

Full power with intelligent mode or 5Hrs @ 100% power & 8Hrs @ 70%

Light distribution options are Type I, II, III & V.

The battery is designed for over 24 hours at full charge with 4 days back up.

Battery requires 4 - 5 hours to replenish.

Each model is supplied with lasercut lettering into the cradle which can be used to highlight, name of place, street / road or place of interest or company name for branding purposes.

Our standard LED brand options are, Philips SMD LED modules.

Standard warranties on components

LEDS 5 years

Electronics 3 years

Solar panels 25 years

Poles 10 years workmanship

Battery boxes / cradles 3 years

All components have an option to extend its warranties.

Local content 60 - 70%

SPECIFICATIONS

LIGHT	POWER	20W
	LED	Philips Lumileds
	IP RATING	IP65
	FLUX @ CCT 5000k	2920lm
	WARRANTY	5 years
	CRI	70 / 80
	OPTICAL CONTROL	PMMA Lenses
	AVERAGE LIFE SPAN	10 years
	OPERATING TEMPERATURE	-30 Deg~ + 45 Deg
	MOUNTING HEIGHT	3m above ground
	BEAM ANGLE	Type I & II short, TM3
	POLE TO POLE DISTANCE	16meters
BATTERY	LITHIUM FERRO PHOSPHATE	LIFEPO4
	VOLTAGE	12.8V
	CAPACITY	384Wh
	CYCLES	2000 - 4000
SOLAR PANEL	RATED POWER	100W Mono
	VOLTAGE AT MAX POWER	18V
	CURRENT AT MAX POWER	5.56Amp
CONTROLLER	CHARGE TYPE	PWM Smart 365
	DIMMING	Intelligent IC - 100 / 70 / 50 / 30
	DAY NIGHT SENSORS	Integrated into controller
	LIGHTING PARAMETERS	4 stage Programmable
	ELECTRICAL PROTECTION	IP 68, Temperature compensation
		Overheating, overcharging and
Over discharging protections		
BRACKETING AND BATTERY BOXES	Alu Zinc and powder coated, Manufactured in an SABS approved facility with ISO 9001 3CR12 Stainless steel optional for coastal environments	
POLE	Galvanized pole, 3.5m pole with baseplate - 76 x 60mm collar	
Powder Coating	Optional	

20W Solar LED Post Top Model SSLASOLPT20UNI-LI

LED Post top

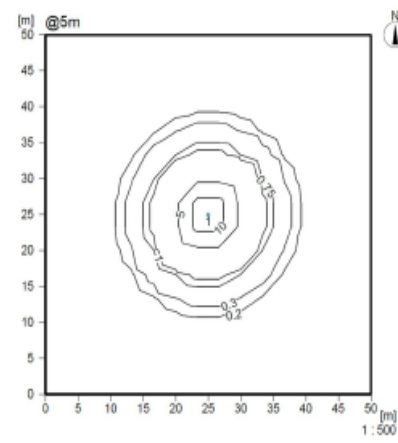
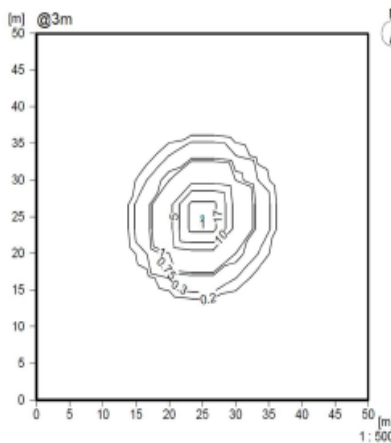
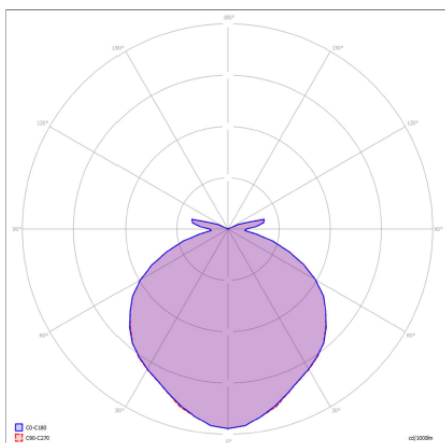


76mm base

Battery Technology- 3.2V Lithium Phosphate



Light distribution



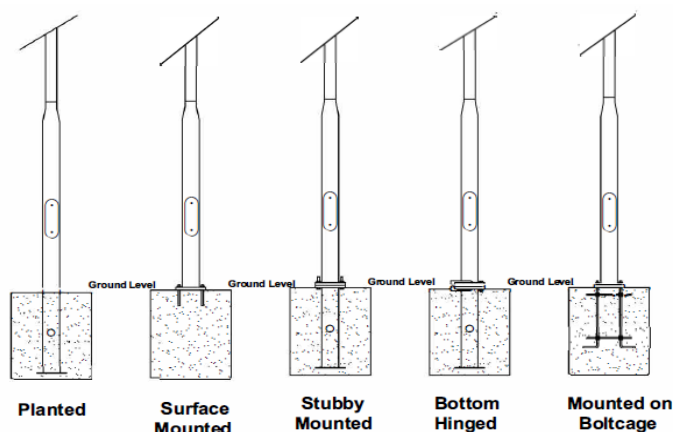
Solar controller
PWM Intelligent Smart 365



Connection leads

- Charge indicator
- Battery indicator
- Load indicator
- Receive port
- Send port
- Temperature sensor

Pole mounting options



Components certifications

LM-79 LM-80 TM21 **IP66 IP68**  